

**ASHIDA Relay Test Block: ART-B**

**ASHIDA Relay Test Plug: ART-P**



ASHIDA RELAY TEST  
 BLOCK  
**ART-B (Vertical)**

ASHIDA RELAY TEST  
 PLUG  
**ART-P (Vertical)**

**'Ojas Series' Relay Test Block & Relay Test Plug**

ASHIDA has launched Relay Test Block and Relay Test Plug. ASHIDA design products are known for reliability, performance and security. Models are specifically design to be best suited for electrical installations.

ASHIDA Relay Test Block (ART-B) and ASHIDA Relay Test Plug (ART-P) are available in horizontal and vertical types.

**Features:**

- Relay Test Block provides facilities for monitoring & secondary injection testing of any power system protection scheme
- ASHIDA Relay Test Block can be mounted adjacent to any relays & systems
- ART-B helps in easy access for injection testing
- Testing can be done without changing wiring of any protective system
- Easy and fast testing
- Standardised Test Block & Test Plug
- Equipment Auxiliary supply isolation.
- CT Shorting
- Multi-Finger Test Plug
- Test Plug provides a safe, isolated, means for CT current monitoring
- Available in horizontal and vertical types

**Available Models:**

Relay Test Block	Relay Test Plug
<b>ART-B</b> (Horizontal)	<b>ART-P</b> (Horizontal)
<b>ART-B</b> (Vertical)	<b>ART-P</b> (Vertical)

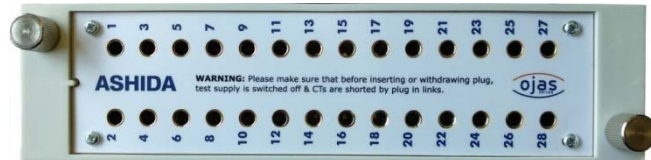
**ASHIDA Relay Test Block: ART-B**

**ASHIDA Relay Test Plug: ART-P**



ASHIDA RELAY TEST BLOCK

ART-B (Horizontal)



ASHIDA RELAY TEST PLUG

ART-P (Horizontal)

**ASHIDA RELAY TEST BLOCK (ART-B)**

**ART-B** is the best solution for testing the protective devices without disturbing the wiring. The Test Block is designed in case size 2. It has 14 pairs of contacts which are linked to a terminal block positioned at rear of the cabinet. When the protection device is in use, all the pairs of contacts are normally closed. It helps in completing the circuit.

The contacts between 13 & 14 and 27 & 28 (for 7+14 position shorting model) is normally open, when the front cover with a metallic probe get inserted it will be shorted. By routing the main DC auxiliary supply to the protection circuit or to relay though this contact, the removal of the test block cover will prevent inadvertent tripping of the protection during the ensuing tests. In without shorting model all the contacts will be in shorted condition and the front cover will be without probe.

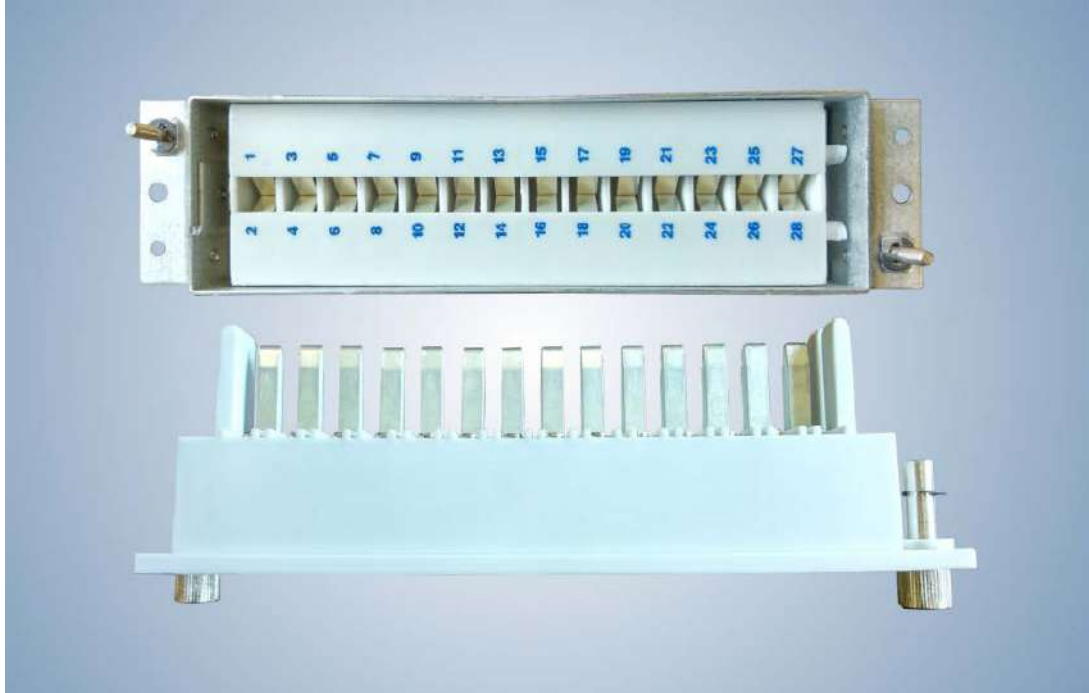
**Terminal Type options:**

1	With Shorting at 7th Position
2	With Shorting at 7th & 14th Position
3	Without Shorting



Shorting  
at 7<sup>th</sup>  
position  
& 14<sup>th</sup>  
position

ART-B without cover



### **ASHIDA RELAY TEST PLUG (ART-P)**

Access to the circuits connected to ART-B test block is provided by ART-P multi-finger test plug. The ART-P is inserted into the ART-B test block. The plug is fixed tightly with the help of 2 screws. The test plug has 28 numbers of sockets for 4mm diameter plug to be inserted.

The ART-P enables convenient wiring of the test equipment prior to insertion into the test block. Use of the ART-P ensures that the circuits operate in a predetermined sequence, according to the application, before breaking the connection between the circuit and line connection.

Each socket is identified by a number which corresponds to the numbered case terminal to which the socket is connected when the plug is inserted.

Test Plug is available in vertical and horizontal types. It is designed with case size 2 enclosure. Test supplies connected to ART-P must be de-energised during insertion to ART-B.

If the DC auxiliary supply is to be used during testing it can be linked using the sockets in the test plug.

**ASHIDA Relay Test Block: ART-B****ASHIDA Relay Test Plug: ART-P****General Specifications:**

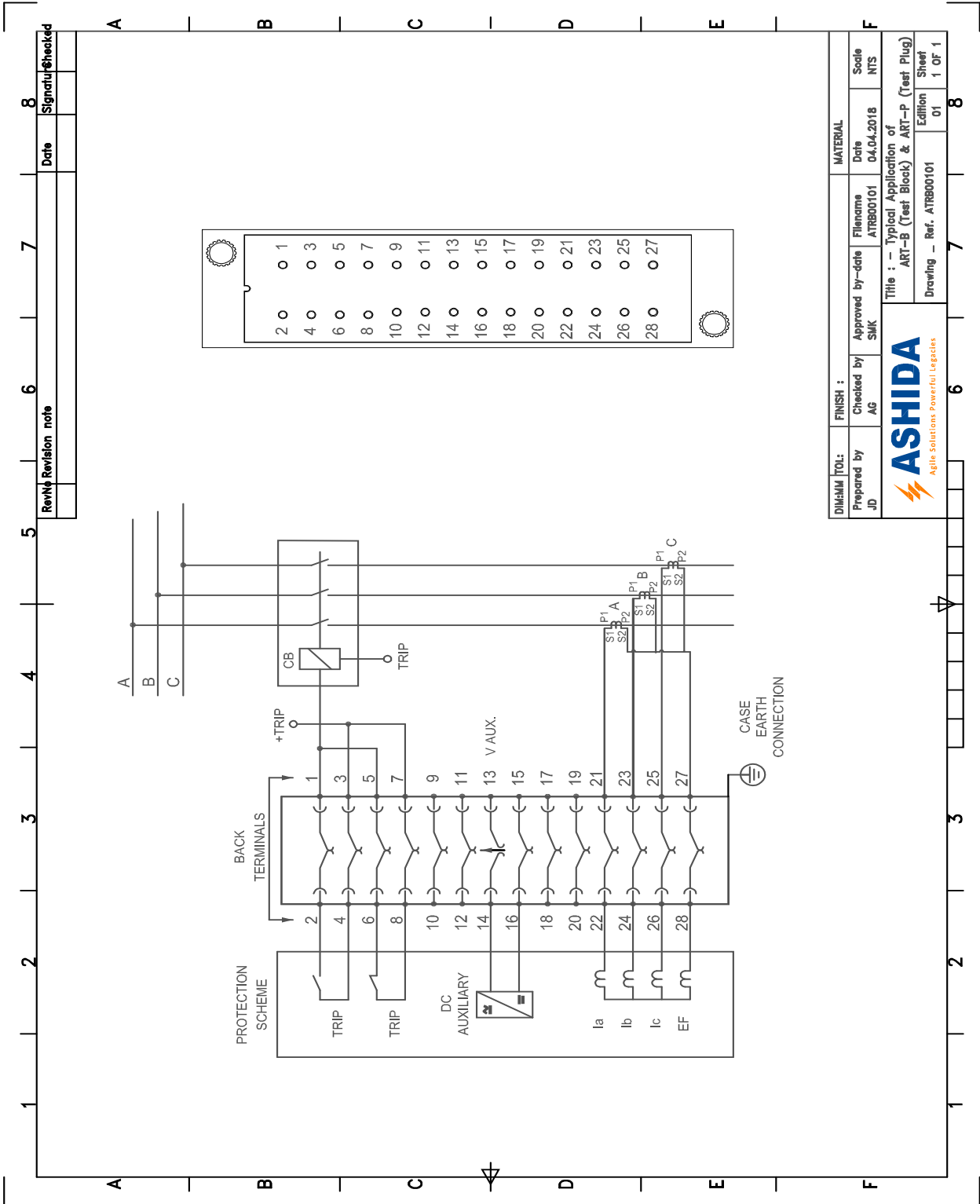
Continuous current :	:20A contineous
Thermal Withstand Capacity:	:250A for 1 sec., 400A for 0.5 sec.
Continuous Rated Voltages:	: 600V
Max. Wire size:	: 4 Sq mm
Insulation Withstand voltage:	:2.5kV for 3.0 sec
Impulse Voltage Withstand:	: 5kV
Insulation Resistance:	: More than 500MΩ @500Vdc

**Drawing References:**

1.	For Cabinet Details: ARTB-V	: MAC01994
2.	For Cabinet Details: ARTB-H	: MAC01996
3.	For Cabinet Details: ARTP-V	: MAC01997
4.	For Cabinet Details: ARTP-H	: MAC01995
5.	Typical Application of ART-B & ART-P	: ARTB00101

## ASHIDA Relay Test Block: ART-B

## ASHIDA Relay Test Plug: ART-P

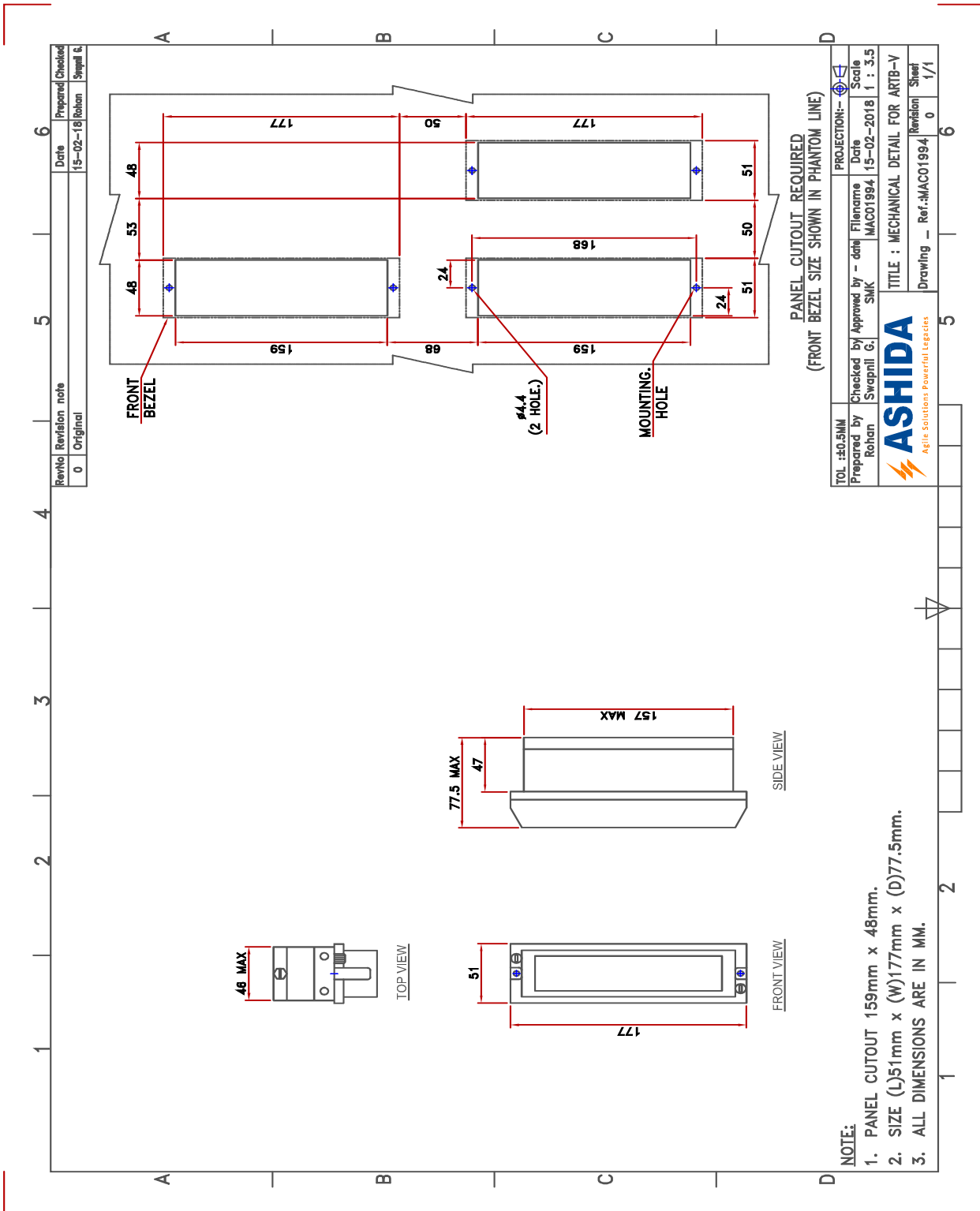


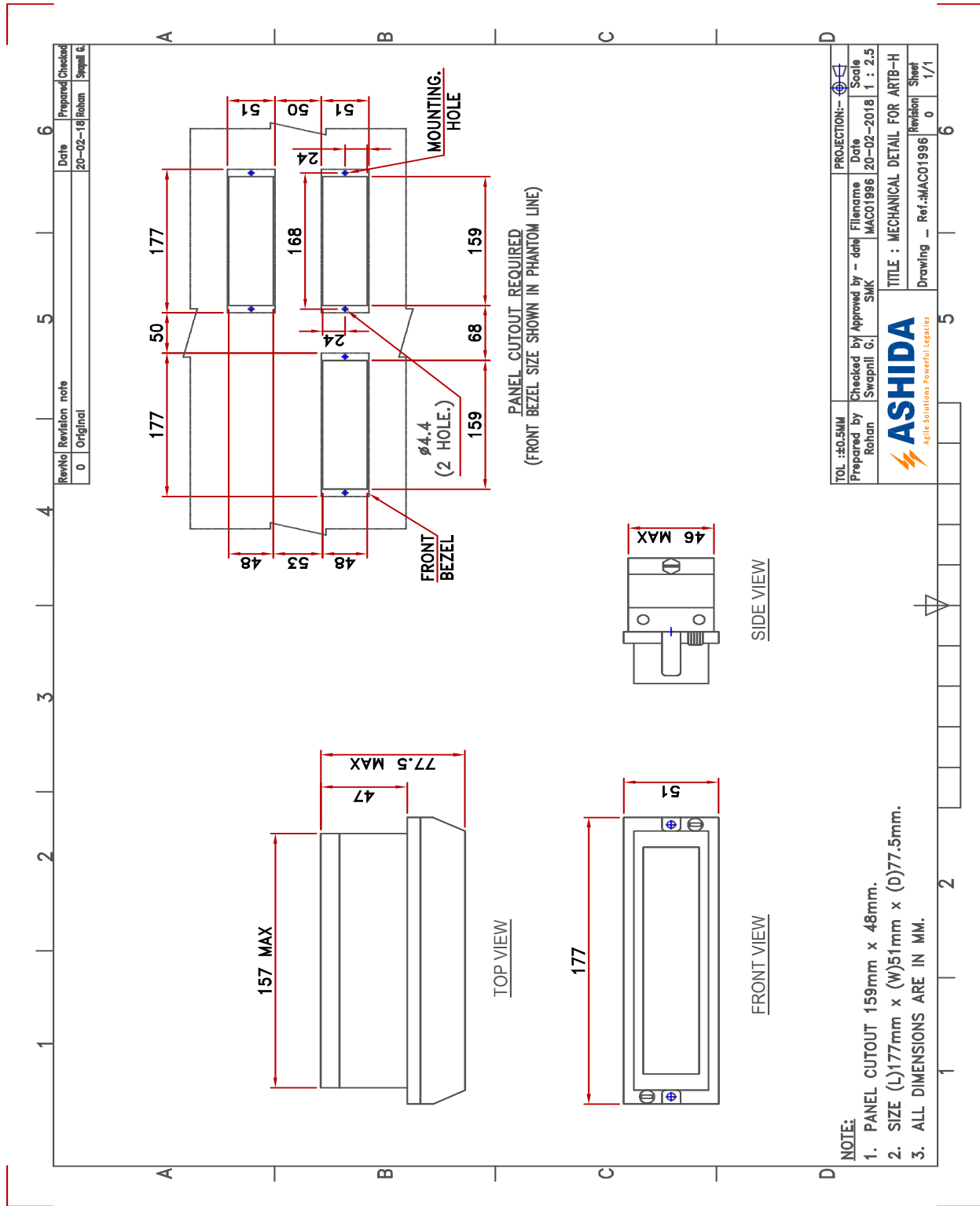
Rev#	Revision note	Date	Signature/Checked

DWG#	TOL:	FINISH :	MATERIAL
Prepared by JD	Checked by AG	Approved by-date SMK	Date 04.04.2018
Title : - Typical Application of ART-B (Test Block) & ART-P (Test Plug)			Scale NTS
Drawing - Ref. ATRB00101			Edition / Sheet 01 / 1 OF 1

## ASHIDA Relay Test Block: ART-B

## ASHIDA Relay Test Plug: ART-P



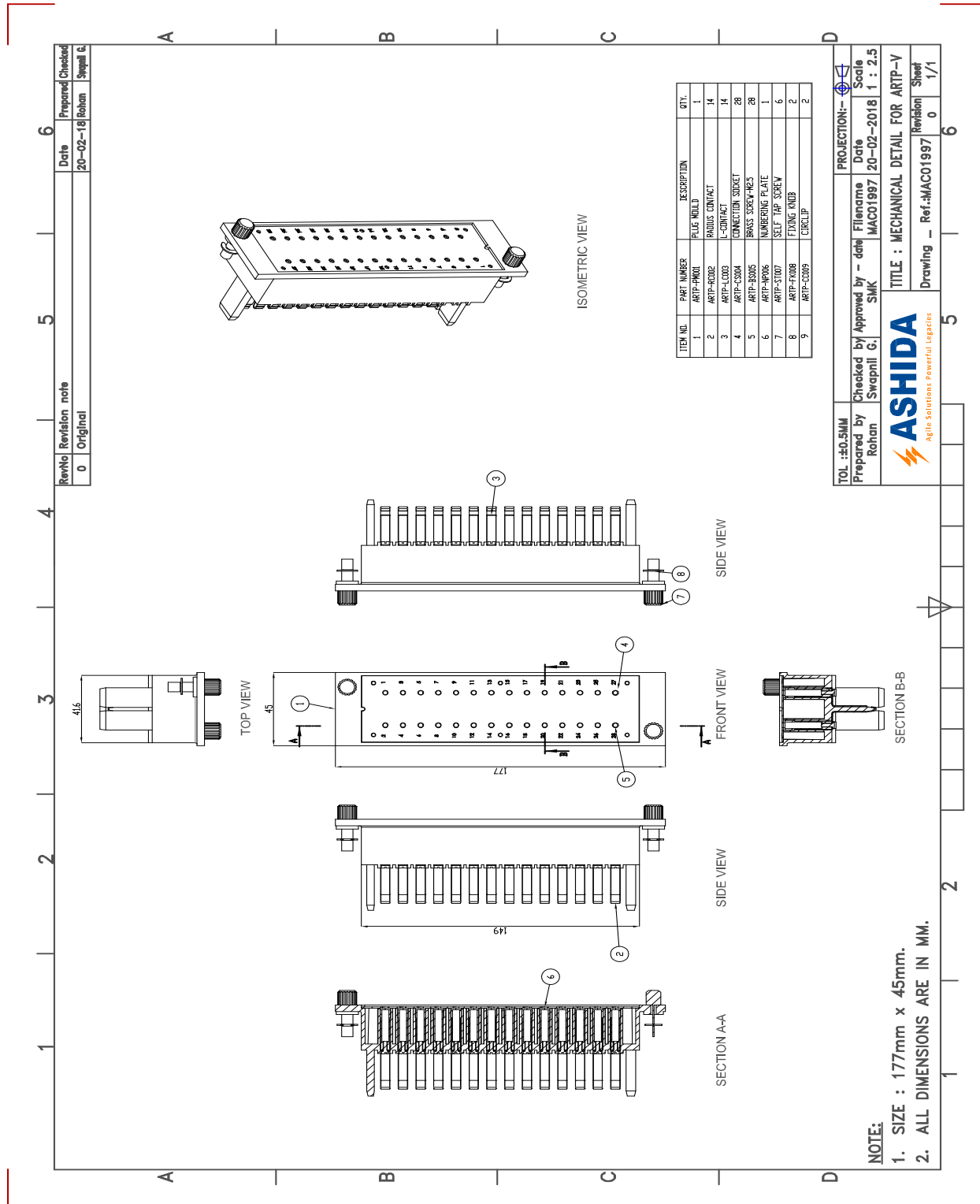


## ASHIDA Relay Test Block: ART-B

## ASHIDA Relay Test Plug: ART-P



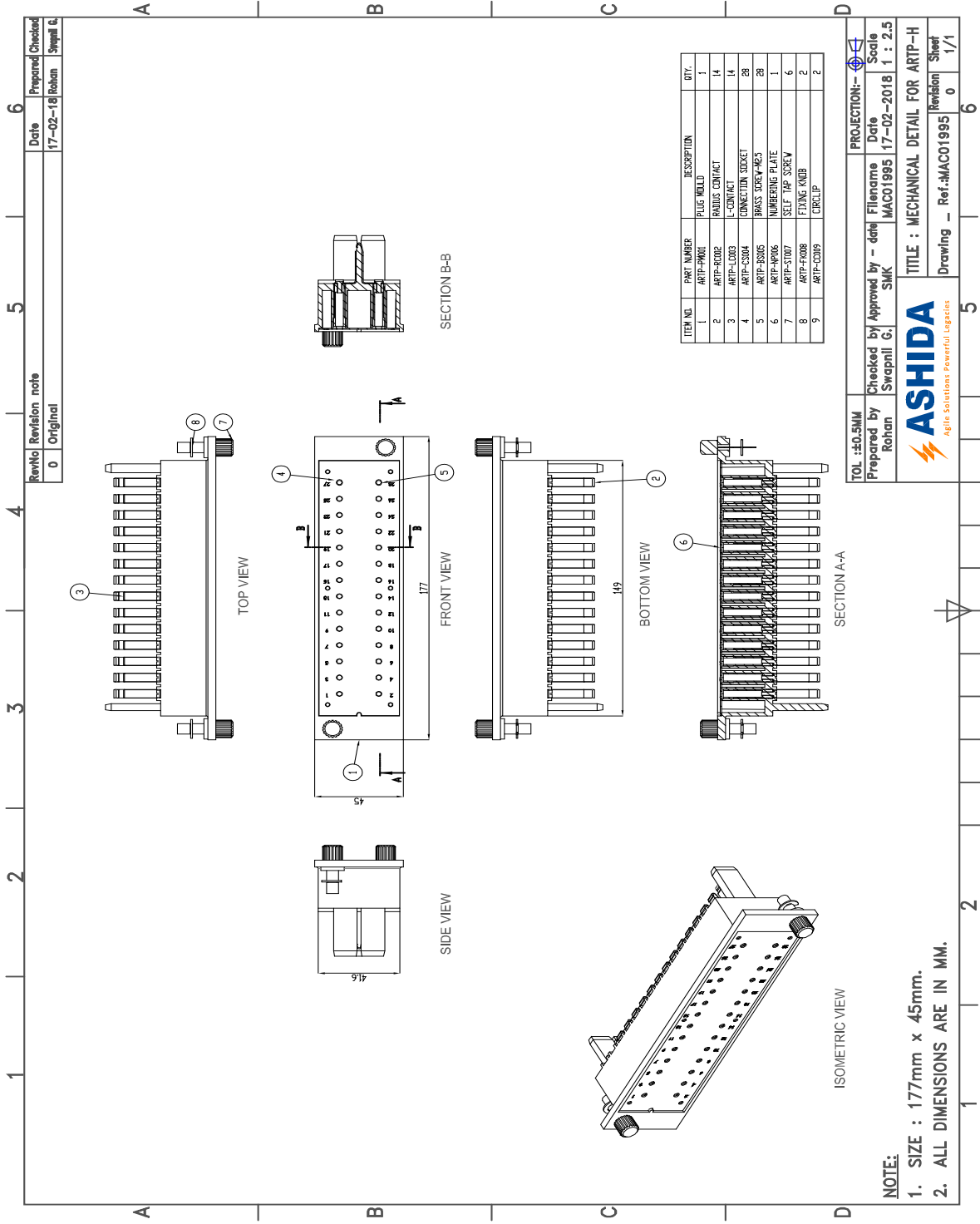
# ART-B ART-P



Rev/No	Revision note	Date	Prepared	Checked
0	Original	20-02-18	Rehan	Swapnil G.

TOL. : ±0.5MM	Checked by	Approved by	File name	Date	Scale
Rehan	Swapnil G.	SMK	MAC01997	20-02-2018	1 : 2.5
TITLE : MECHANICAL DETAIL FOR ARTP-V				Revision	Sheet
Drawing _ Ref:MAC01997				0	1/1





**NOTE:**  
 1. SIZE : 177mm x 45mm.  
 2. ALL DIMENSIONS ARE IN MM.

TOL : ±0.5MM  
 Checked by Swapnil G.  
 Approved by Rohan  
 Filename: MACO1995  
 Date: 17-02-2018  
 Scale: 1 : 2.5  
**ASHIDA**  
 Agile Solutions Powerful Legacies  
**TITLE : MECHANICAL DETAIL FOR ART-P-H**  
 Drawing \_ Ref.:MACO1995  
 Revision Sheet 0 1/1

**ASHIDA Relay Test Block: ART-B**

**ASHIDA Relay Test Plug: ART-P**



Model Selection Guide - ASHIDA Relay Test Block													
	1 to 3	4	5	6	7	8	9	10	11	12	13	14	15
<b>Model</b>	<b>ART -</b>					<b>X</b>	<b>X</b>	<b>X</b>	<b>X</b>	<b>X</b>	<b>X</b>	<b>X</b>	<b>X</b>
ASHIDA Relay Test													
<b>Type</b>													
Block		<b>B</b>											
<b>Orientation</b>													
Horizontal			<b>H</b>										
Vertical			<b>V</b>										
<b>Terminal Type</b>													
With Shorting at 7th Position				<b>1</b>									
With Shorting at 7th & 14th				<b>2</b>									
Without Shorting				<b>3</b>									
<b>Case Size</b>													
Case Size 2					<b>2</b>								

Model Selection Guide - ASHIDA Relay Test Plug													
	1 to 3	4	5	6	7	8	9	10	11	12	13	14	15
<b>Model</b>	<b>ART -</b>					<b>X</b>	<b>X</b>	<b>X</b>	<b>X</b>	<b>X</b>	<b>X</b>	<b>X</b>	<b>X</b>
ASHIDA Relay Test													
<b>Type</b>													
Plug		<b>P</b>											
<b>Orientation</b>													
Horizontal			<b>H</b>										
Vertical			<b>V</b>										
<b>Terminal Type</b>													
Not Applicable				<b>X</b>									
<b>Case Size</b>													
Case Size 2					<b>2</b>								

**ASHIDA ELECTRONICS PVT LTD.****All rights reserved.**

All brand or product names appearing in this document are the trademark or registered trademark of their respective holders. No ASHIDA trademarks may be use without written permission.

The information in this document is provided for informational use only and is subject to change without legal notice. ASHIDA ELECTRONICS PVT LTD. has approved only the English language document.

